

THE VILLAGE NEWS

VOLUME 9, NUMBER 2

SERVING THE PEOPLE OF CABIN JOHN AND BEYOND NOVEMBER-DECEMBER 1976

GOOD-BYE, N-8 BUS LINE

by Andy Rice

Friday, 6:45 p.m. The little crowd at the Glen Echo Shopping Center peers down the darkness of MacArthur Boulevard.

Around the bend the running lights finally appear. A quick cheer, the bus arrives, the faithful band clambers aboard. The last run of the N-8 bus line has begun.

While the champagne and pretzels are being handed around, the bus makes its way back to the Parkway, curves around behind Glen Echo Park, and swings up to MacArthur again for its farewell trip through Cabin John.

Thus did the end come to the N-8 on Friday, November 12, 1976; with it the end to all public transportation in Cabin John. Everybody was sorry to see it go, but nobody (well, hardly anybody) rode on it.

The little buses -- their small size geared to the weight limitation on MacArthur -- had been running since 1960 when the last of the old No. 20 trolley cars had given up the ghost. For many years terminating at the Quick Food Shop (with two runs a day out to the Model Basin), the

(Continued on next page)

Union Arch Bridge Will Reopen December 4th

by Shelly Keller

The Union Arch Bridge will reopen to pedestrian, bicycle and vehicular traffic on Saturday, December 4th. The 10 A.M. ceremony will be held on the Bannockburn side of the bridge and everyone is invited to attend. The Army Corps of Engineers is hosting the 10 A.M. opening, which will include presentations by several public figures, among them Congressman Gilbert Gude.

The completion is coming a few weeks earlier than the original estimated January 1st completion date. Mr. William Miller, crew foreman for the U.S. Army Corps of Engineers' repair of the bridge, spent over a year researching the concrete coloring necessary to match the over 100-year old Seneca sandstone used on the peripet of the bridge. The discovery of a dye formula will play a significant role in the repair of the old Smithsonian buildings as well as portions of the canal locks which are also constructed of Seneca sandstone.

According to Rex Borsari of THE ECHO, several of the old sandstones removed from the bridge will be used in fashioning a monument which will hold two plaques. The larger will indicate the bridge as a National Historic Site; a smaller plaque, in the shape of a drop of water will signify the bridge's use as an aqueduct.

CITIZENS ASSOCIATION MEETING NOVEMBER 23

The Cabin John Citizens Association will hold its next meeting Tuesday, November 23 at 8PM at Clara Barton School. The topic of discussion: "Are Taxes Too High in Montgomery County?" Speakers will include Neal Potter, a member of the Montgomery County Council and a representative of the Montgomery County Taxpayers' League.



CABIN JOHN CITIZENS ASSOCIATION HOLIDAY PARTY

The Cabin John Citizens Association is having a holiday party, Friday, December 17 at Clara Barton School from 7 to 9PM. There will be refreshments, Santa Claus, and the Cabin John Four Year Old School class will sing.

Each family is asked to bring a finger-food dessert to share.

SPACE AVAILABLE IN CABIN JOHN 4-YEAR OLD SCHOOL

One space is available in the Cabin John Four Year Old School. This nursery program operates at Clara Barton School Mondays thru Fridays from 9AM to 11:30. The monthly pledge per student is \$25.00. Arrangements for financial assistance can be made. Anyone interested should call Cappie Morgan, 320-3269.

**ED CLARK
& SON**
ABC TRUCKING
moving
hauling
yard work
reasonable
229-7311

**PIANO
VIOLIN
STUDIO**

CHILDREN*ADULTS*ALL LEVELS
VERA DOLEZAL
6701 Persimmon Tree Road
229-5685

THE VILLAGE NEWS is published monthly in Cabin John, Maryland. Subscriptions are \$3.00 per year for non-residents and free to Cabin John residents. Mail all articles, inquiries, suggestions, complaints, letters and subscriptions (with payment) to:
The Editor
THE VILLAGE NEWS
Post Office Box 184
Cabin John, Maryland 20731

**THE VILLAGE NEWS
PEOPLE**

Shelly Keller, EDITOR
Bev Sullivan, CIRCULATION
Mary Shaw, TREASURER
Susan Gash, ADVERTISING

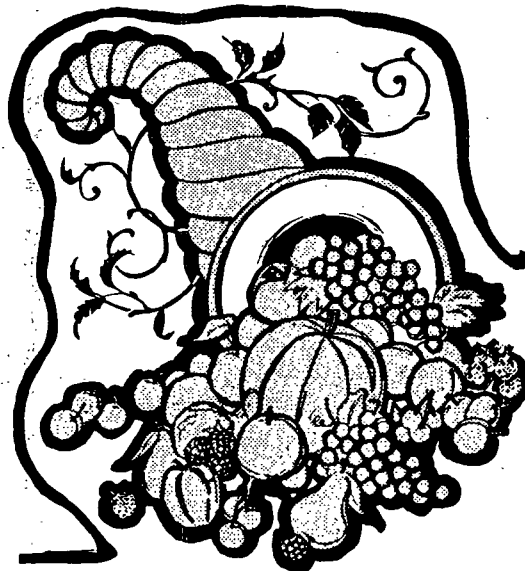
GOOD-BYE, N-8 BUS LINE (continued)

route was extended in September 1975 up Persimmon Tree Road into Carderock Springs, and weekend and night service were eliminated.

But the new route failed to generate any great increase in riders, although 10 to 12 regular passengers could be counted on during the rush hours. Some said that Metro was at fault for failing to publicize the expanded service. Others urged that the line run "cross-country" to Bethesda, where people wanted to go, rather than being merely a local line up and down the Potomac.

Last summer Metro proposed discontinuing the route. The regular riders signed a petition; a half dozen Cabin Johners made their way to the public hearing in Rockville to protest. But the economic facts of life were against them. Metro gathered its data; on three or four days during the fall, employees rode on the bus to count the passengers. The count came out to an average of less than one person per trip.

It was fun while it lasted. And perhaps, in a few years, when the subway line gets out to Friendship Heights, and "feeder" service becomes fashionable, it will be time for Cabin John once again to have a community bus line.



ART, CRAFT & GIFT FAIR

Make a special note on your holiday calendar that there will be an Art, Craft & Gift Fair at Bannockburn Clubhouse (6314 Bannockburn Drive) from 11A.M. to 5P.M. on Sunday, Dec. 5. Both professional and amateur local artist's works will be featured. On sale also will be gifts from abroad, home-baked holiday breads, cakes, cookies, and seasonal decorative plants. Come and do your winter holiday shopping.

REGISTERED MASTER PLUMBER

EMIL DOLEZAL

PLUMBING AND HEATING

DISHWASHERS*REMODELING*HEATERS
REPAIRS*DRAIN SERVICE*DISPOSERS
FULLY BONDED AND INSURED

229-5685

**QUICK
FOOD SHOP**

PASTRIES*MEATS*CARRY-OUT!
GROCERIES*BREAKFAST*LUNCH
MONDAY THROUGH SATURDAY

6:30 am to 6:00 pm

VILLAGE NEWS NEEDS \$ AND VOLUNTEERS!

THE CABIN JOHN VILLAGE NEWS needs money and staff. At the opening celebration on the Union Arch Bridge on Saturday, December 4 at 10A.M., friends of THE CABIN JOHN VILLAGE NEWS will be collecting the much needed funds if publication is to continue. It is estimated that \$2 per household is needed to produce 10 issues per year, so please contribute.

As for staff, we need writers, a treasurer, deliverers, photographers, lay-out and paste-up people. If you think you can pitch in some time each month in putting the paper together, please call Minda Wetzel at 229-4618. There will be a meeting open to anyone interested in working on THE CABIN JOHN VILLAGE NEWS on December 8 at 8PM at Minda's house, 7615 Cabin Road. Everyone's talents are welcome, regardless of age, so please come! We need your ideas, energy and enthusiasm.

GLEN ECHO GALLERY OPEN NEW HOURS FOR HOLIDAY SHOPPING

The Glen Echo Gallery in the historic Chautauqua Tower at Glen Echo Park, displays for sale the works of the Park's resident artists. Pottery, prints, enamels, drawings, textiles, jewelry, sculpture, hangings and paintings are available.

Visit the Gallery during special holiday hours on Wednesdays and Fridays from 12-5PM, Thursdays from 12-8PM and Saturdays from 12-6PM and select original and unique holiday gifts.



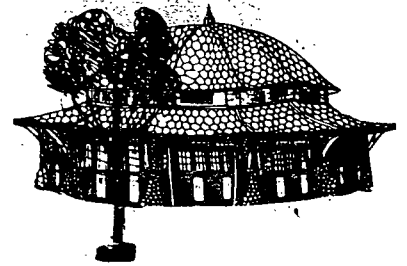
Foxhall Square

**Infants, toddlers, children thru age 7
Now open at Foxhall Square**

3301 New Mexico Ave., N.W., Washington, D.C. 20016, (202) 244-0500 Free parking with purchase.

CABIN JOHN HOMESTUDY PROGRAM REACTIVATED

This fall the Cabin John Homestudy will go back into activity with a tutoring program. Ms. Jacquie Porter, a Team One teacher at Bannockburn, has offered her help in diagnosing and prescribing for individual children who would benefit from the program. We need tutors -- persons over 18 years of age who are able to faithfully give of their time on a regular basis and we need for you parents to ask for help for your child. The program will be free; any expense will be born by Homestudy's Treasury. If you would like more information on the Homestudy Tutoring Program, please contact me, Diane Kellogg at 229-7412.



HOLIDAY FESTIVAL AT GLEN ECHO PARK DECEMBER 5TH

On Sunday, December 5th from 1-6PM, Glen Echo Park is holding its winter festival. Enjoy free live entertainment, food from the Cafe de Paris of Georgetown, walk-in arts workshops and demonstrations. Shop for unique gifts in the Glen Echo Gallery, see Charles Dickens' A CHRISTMAS CAROL in the Adventure Theatre, and enjoy films on the Pictorial History of Glen Echo.

Throughout the afternoon see "Victorian Christmas" at the Clara Barton House. Join a Public Meeting at 2PM in the Park Office to discuss present and future plans for the Park. The Holiday Festival is sponsored by the National Park Service. For further information, call 492-6282.

UNICEF GIFT & CARD SHOP OPENS IN GLEN ECHO

A UNICEF and Camphill gift and card shop will be opening at the Town Hall beginning November 26. Camphill is a community for the retarded, who make dolls, belts, jewelry, etc. for gift giving. The shop will be open from 9-5 weekdays, and during post office hours on Saturdays.

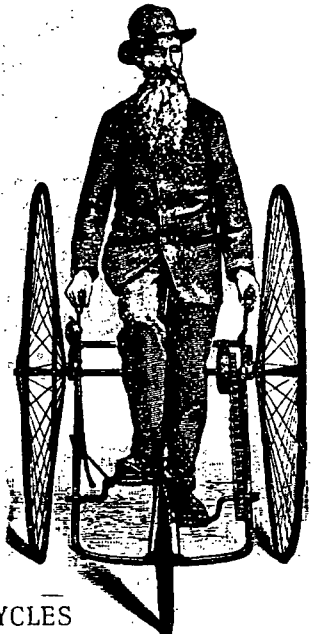
BANNOCKBURN DIRECTORIES
& T-SHIRTS AVAILABLE

Bannockburn School Directories are still on sale at the school office during school hours for 50¢. Bannockburn t-shirts (small, sizes 6-8 and large, sizes 14-16) are also available for \$2.25.



SEASON'S
GREETINGS
FROM THE
VILLAGE
NEWS
STAFF

**Dorothy
Helens**
BEAUTY SALON
TUESDAY THROUGH SATURDAY
9:00 am to 5:00 pm
7630 TOMLINSON AVENUE at No. 15
229-1361 or 229-9811



BICYCLES

It is a Montgomery County law that bicycles must be registered at the police station. The nearest station for the Bannockburn School community is at 7359 Wisconsin Avenue in Bethesda. To register a bike, bring a complete physical description (no need to bring the bike) including the serial number. There is a 50¢ charge for each bike. It may be registered at any hour, any day of the week.

**THE VILLAGE NEWS
DISPLAY ADVERTISING RATES:**

Full page	\$40.00
2/3 page	\$30.00
1/2 page	\$25.00
1/3 page	\$15.00
1/6 page	\$10.00
1/12 page	\$ 6.00

Numbers of Note
DIAL-A-MUSEUM - 737-8811 for daily announcements of new exhibits and special events.
DIAL-A-PHENOMENON - 737-8855 for weekly announcements on stars, planets and worldwide occurrences of short-lived natural phenomenon.

NEWCOMERS!

Copies of the CABIN JOHN COMMUNITY PLAN and the CABIN JOHN COMMUNITY DIRECTORY can be obtained by calling Cappie Morgan at 320-3269.

**CABIN JOHN
POTTERY LESSONS**
On the wheel Children & adults
Small classes Day or Evening
7687 MacArthur Boulevard
Call 229-7530

smocks, dresses, caftans, dashikis,
kurtas, aprons, patching, original
tie-dyes, applique and tie dyed
pillows. alterations.
HAND CREATIONS BY GINGER
call g. souder at 301-253-3758

CLASSIFIED

FOR SALE: Sharp color tv, Portable, used, finicky antenna, but dependable. \$100. Call Clark's at 229-7311.

FOR SALE: Springer Spaniel puppy, 4 mos. old. Call 229-9299.

COUPLE LOOKING for house or apartment in Cabin John or Glen Echo. Refs. available. 320-5583.

HOUSECLEANER NEEDED; 1 day per week. MacArthur Blvd. & Persimmon Tree. 229-1107.

LOST: Black binder containing Montgomery College notebooks in vicinity of Cabin John or Beltway. Call Cat 229-2158.

LEAF RAKING & odd jobs. 2 boys will work for \$1.50 per hour (each). Call Mitch (229-7412) or Rich (229-7475).

HOUSE OR APT. in Cabin John, Potomac or Glen Echo -- would like 2 BRs or more. Refs. available. 229-7530.